

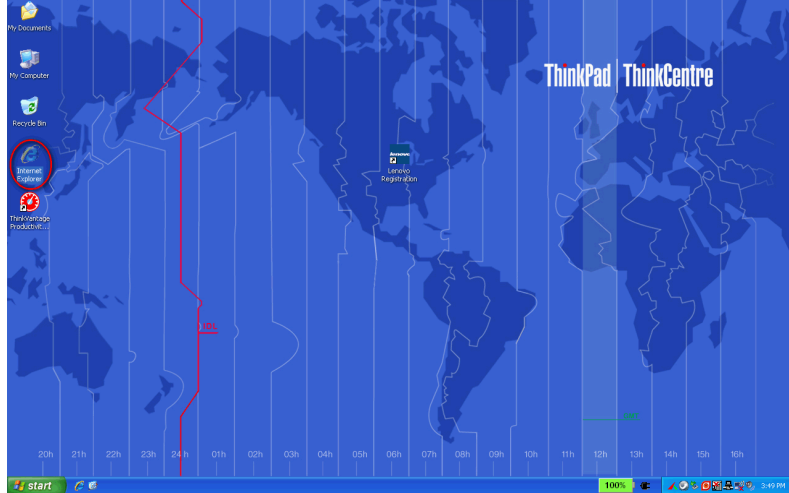
How to register ESET Smart Security

HT30600005

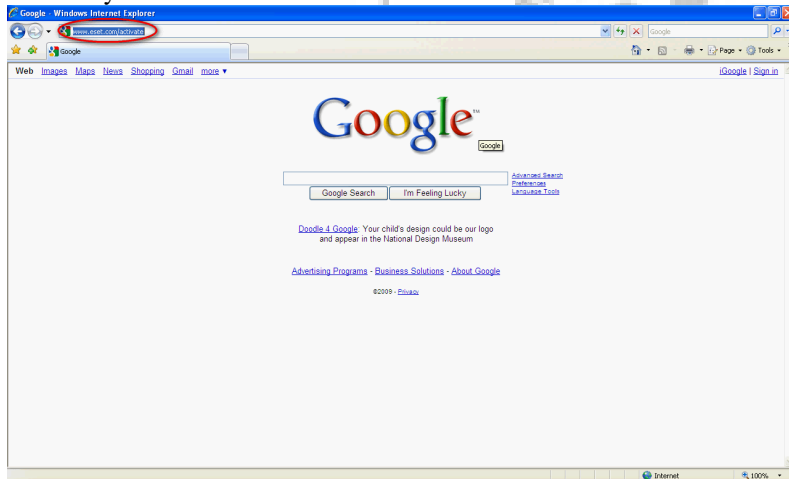
OS: Windows XP

Keywords: register, eset, smart, security

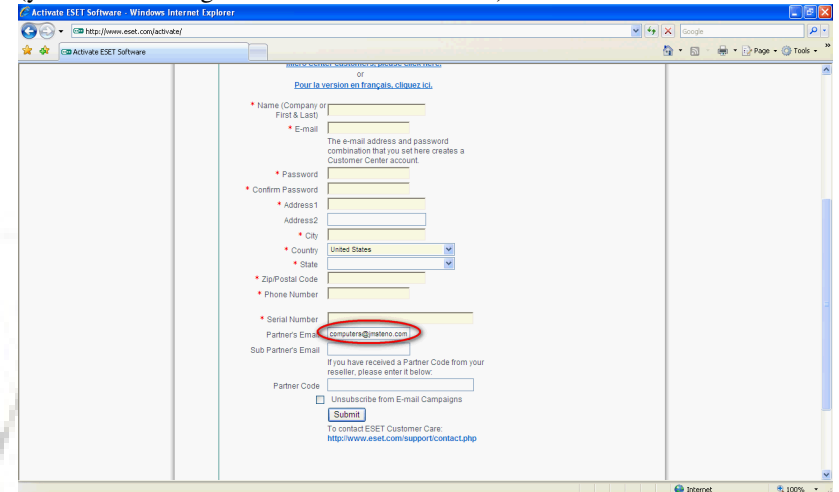
1. Once connected to the Internet, double-click the **Internet Explorer** icon.



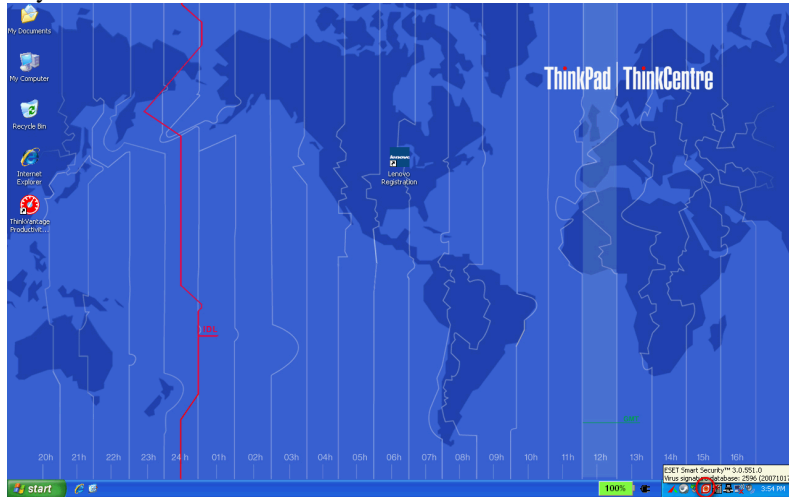
2. Click on the **address bar** and type in www.eset.com/activate. Press your **Enter** key.



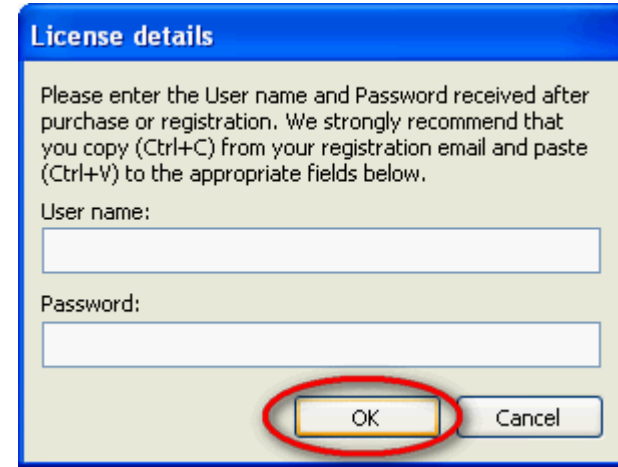
3. Fill out the form. In the **Partners Email** box, type in computers@jmsteno.com. This allows us reserve a copy of your username/password in case you lose it. Click on the Submit button and you will be given your username and password for ESET. Write these down (you should also get an email with same info).



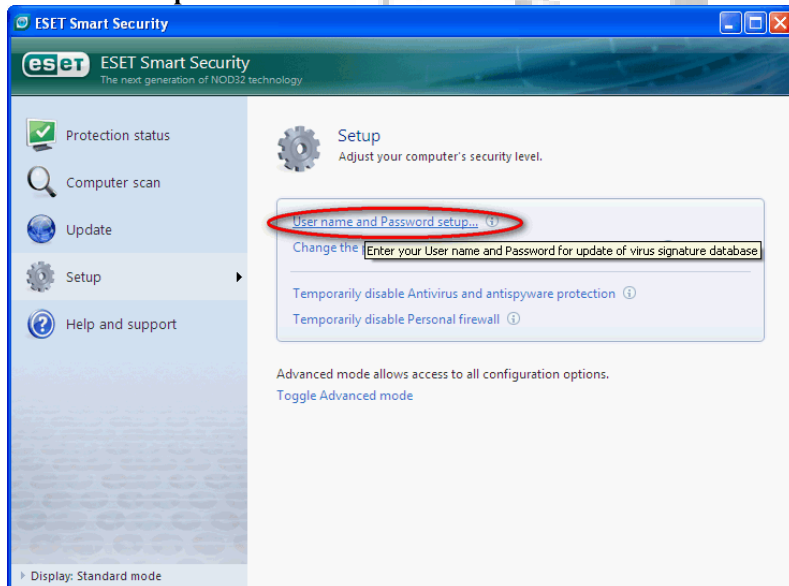
4. Double-click the **ESET Smart Security** icon in the lower right-hand corner of your screen.



6. Enter in the username and password you recorded earlier and click on the **Ok** button.



5. Click on **Setup** if it's not already selected, and then click on **Username and Password Setup**.



7. Once complete, close ESET Smart Security and restart your computer. The Smart Security software will update itself on its own. This process is complete.

