

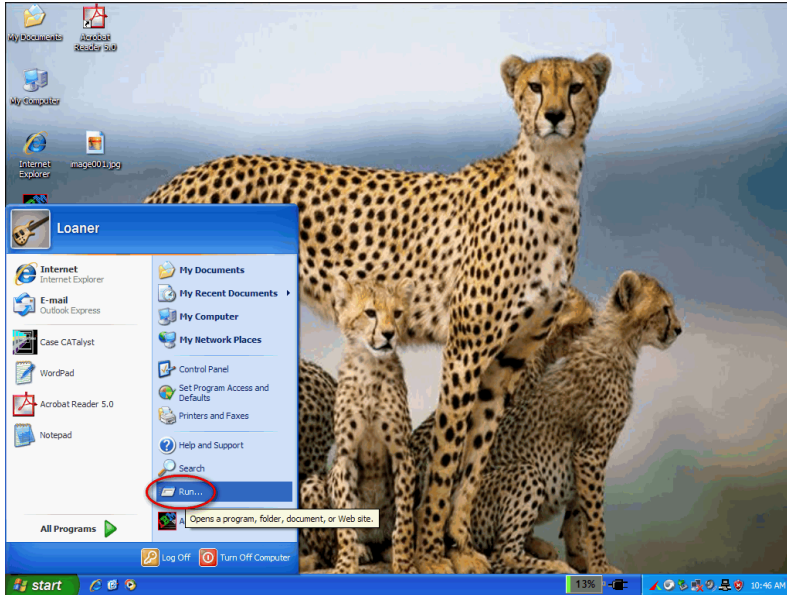
How to Duplicate a Floppy Disk

HT10600003

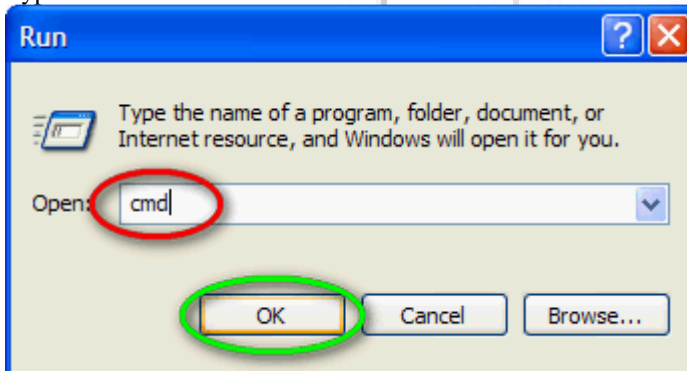
OS: Windows XP, 2000

Keywords: duplicate, floppy, disk

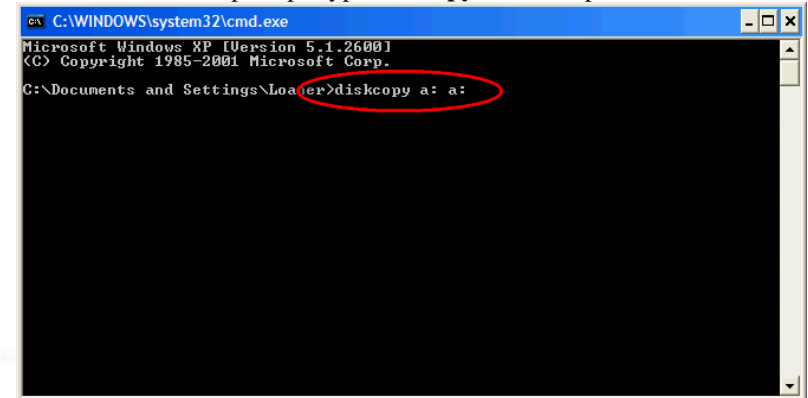
1. Click on **Start** and then **Run**.



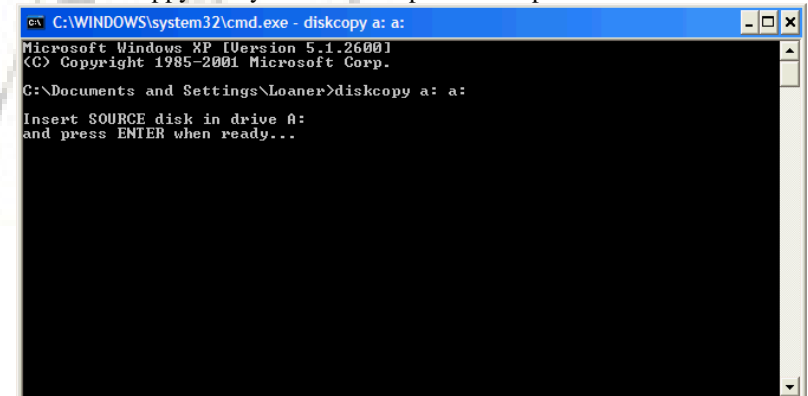
2. Type in **cmd** and click on **Ok**.



3. From the command prompt, type **diskcopy a: a:** and press **Enter**.



4. Insert the floppy disk you want to duplicate and press **Enter**.



Wait for the disk to finish the copy process.

5. Insert a blank floppy disk you want to copy to and press **Enter**.

```
ca C:\WINDOWS\system32\cmd.exe - diskcopy a: a:
Microsoft Windows XP [Version 5.1.2600]
(C) Copyright 1985-2001 Microsoft Corp.

C:\Documents and Settings\Loaner>diskcopy a: a:

Insert SOURCE disk in drive A:
and press ENTER when ready...

Copying 80 tracks
18 sectors per track, 2 side(s)

Insert TARGET disk in drive A:
and press ENTER when ready...
```

Wait for the disk to finish the copy process.

7. Type **Exit** and press **Enter** to exit the command prompt.

```
ca C:\WINDOWS\system32\cmd.exe
Microsoft Windows XP [Version 5.1.2600]
(C) Copyright 1985-2001 Microsoft Corp.

C:\Documents and Settings\Loaner>diskcopy a: a:

Insert SOURCE disk in drive A:
and press ENTER when ready...

Copying 80 tracks
18 sectors per track, 2 side(s)

Insert TARGET disk in drive A:
and press ENTER when ready...
Volume Serial Number is B8CA-0FA0

Copy another disk (Y/N)? n

C:\Documents and Settings\Loaner>exit
```

6. When asked if you wish to copy another disk, type **N** and press **Enter**.

```
ca C:\WINDOWS\system32\cmd.exe - diskcopy a: a:
Microsoft Windows XP [Version 5.1.2600]
(C) Copyright 1985-2001 Microsoft Corp.

C:\Documents and Settings\Loaner>diskcopy a: a:

Insert SOURCE disk in drive A:
and press ENTER when ready...

Copying 80 tracks
18 sectors per track, 2 side(s)

Insert TARGET disk in drive A:
and press ENTER when ready...
Volume Serial Number is B8CA-0FA0

Copy another disk (Y/N)? n
```

